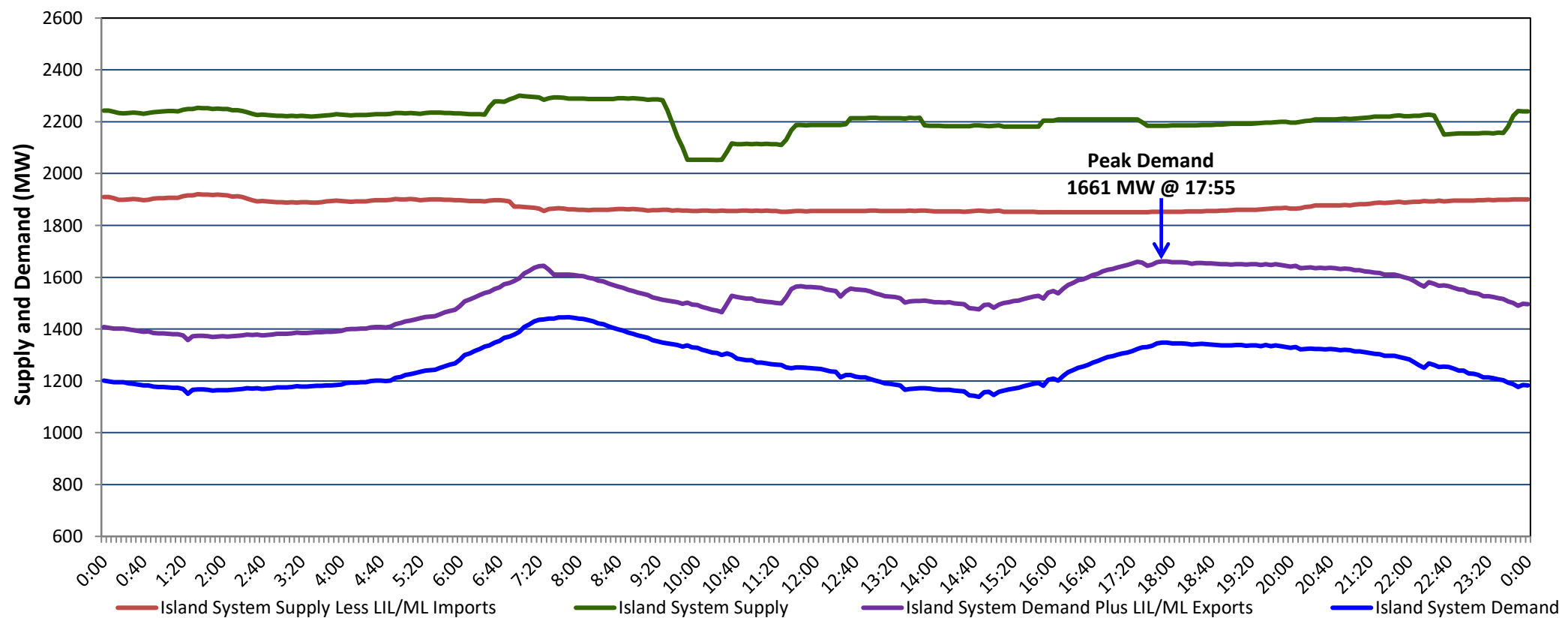


## Newfoundland Labrador Hydro (NLH) Supply and Demand Status Report Filed Tuesday, February 14, 2023

### Section 1 Island Interconnected System Supply, Demand & Exports Actual 24 Hour System Performance For Monday, February 13, 2023



#### Supply Notes For February 13, 2023

1,2

- A As of 1300 hours, February 05, 2023, Granite Canal Unit available at 32 MW (40 MW).  
B As of 1201 hours, February 06, 2023, Holyrood Unit 3 unavailable (150 MW).

### Section 2 Island Interconnected Supply and Demand

Tue, Feb 14, 2023	Island System Outlook <sup>3</sup>		Seven-Day Forecast		Temperature (°C)		Island System Daily Peak Demand (MW)	
					Morning	Evening	Forecast	Adjusted <sup>7</sup>
Available Island System Supply: <sup>5</sup>	2,076	MW	Tuesday, February 14, 2023	-3	-1	1,780	1,679	
NLH Island Generation: <sup>4,8</sup>	1,365	MW	Wednesday, February 15, 2023	0	-3	1,410	1,314	
NLH Island Power Purchases: <sup>6</sup>	130	MW	Thursday, February 16, 2023	-4	1	1,395	1,299	
Other Island Generation:	230	MW	Friday, February 17, 2023	2	4	1,280	1,185	
ML/LIL Imports:	351	MW	Saturday, February 18, 2023	-3	-5	1,465	1,368	
Current St. John's Temperature & Windchill:	-5 °C	-14 °C	Sunday, February 19, 2023	-7	-5	1,435	1,338	
7-Day Island Peak Demand Forecast:	1,780	MW	Monday, February 20, 2023	-1	-1	1,365	1,269	

#### Supply Notes For February 14, 2023

3

- C At 0125 hours, February 14, 2023, Holyrood Unit 2 unavailable (170 MW).

- Notes:
1. Generation outages for running and corrective maintenance are included. These are not unusual for power system operations. They generally do not impact customer supply. The power system operators schedule outages to system equipment whenever possible to coincide with periods when customer demands are low and sufficient supply reserves are available. However, from time to time equipment outages are necessary and reserves may be impacted.
  2. Due to the Island system having no synchronous connections to the larger North American grid, when there is a sudden loss of large generating units there may be a requirement for some customer's load to be interrupted for short periods to bring generation output equal to customer demand. This automatic action of power system protection, referred to as under frequency load shedding (UFLS), is necessary to ensure the integrity and reliability of system equipment. Under frequency events have typically occurred 5 to 8 times per year on the Island Interconnected System and the resultant customer load interruptions are generally less than 30 minutes. With the activation of the Maritime Link frequency controller during the winter of 2018, UFLS events have occurred less frequently.
  3. As of 0800 Hours.
  4. Gross output including station service at Holyrood (24.5 MW) and improved NLH hydraulic output due to water levels (35 MW).
  5. Gross output from all Island sources (including Note 4).
  6. NLH Island Power Purchases include: CBPP Co-Gen, Nalcor Exploits, Rattle Brook, Star Lake, Wind Generation and capacity assistance (when applicable).
  7. Adjusted for curtailable load, market activities and the impact of voltage reduction when applicable.
  8. Due to limitations inherent in the design of combustion turbines, the output of combustion turbines may be reduced in the event that ambient temperatures exceed the threshold.

### Section 3 Island Peak Demand Information Previous Day Actual Peak and Current Day Forecast Peak

Mon, Feb 13, 2023	Actual Island Peak Demand <sup>9</sup>	17:55	1,661 MW
Tue, Feb 14, 2023	Forecast Island Peak Demand		1,780 MW

- Notes: 9. Island Demand / LIL / ML Exports (where applicable) is supplied by NLH generation and purchases, plus generation owned and operated by Newfoundland Power and Corner Brook Pulp & Paper (Deer Lake Power, DLP).